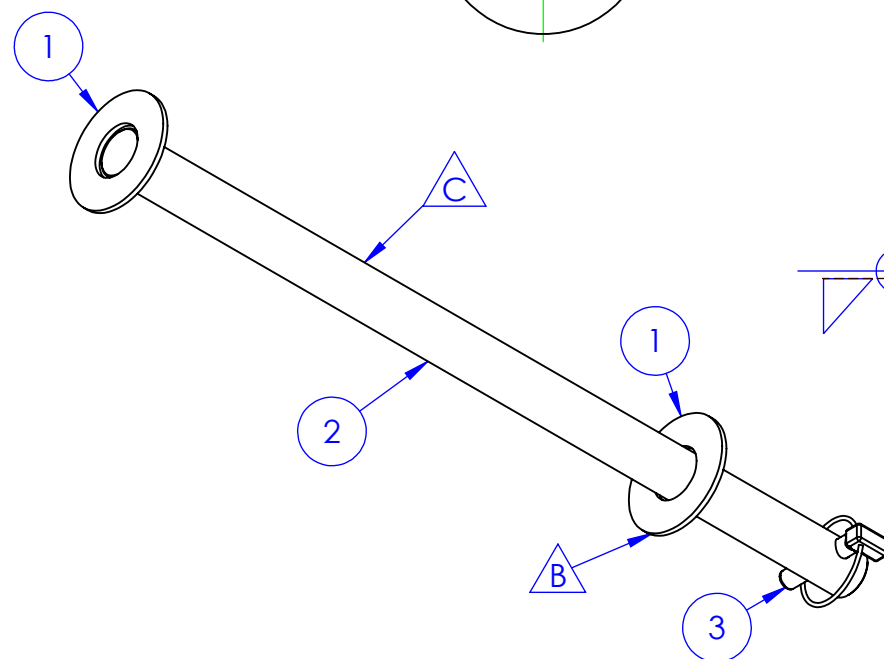
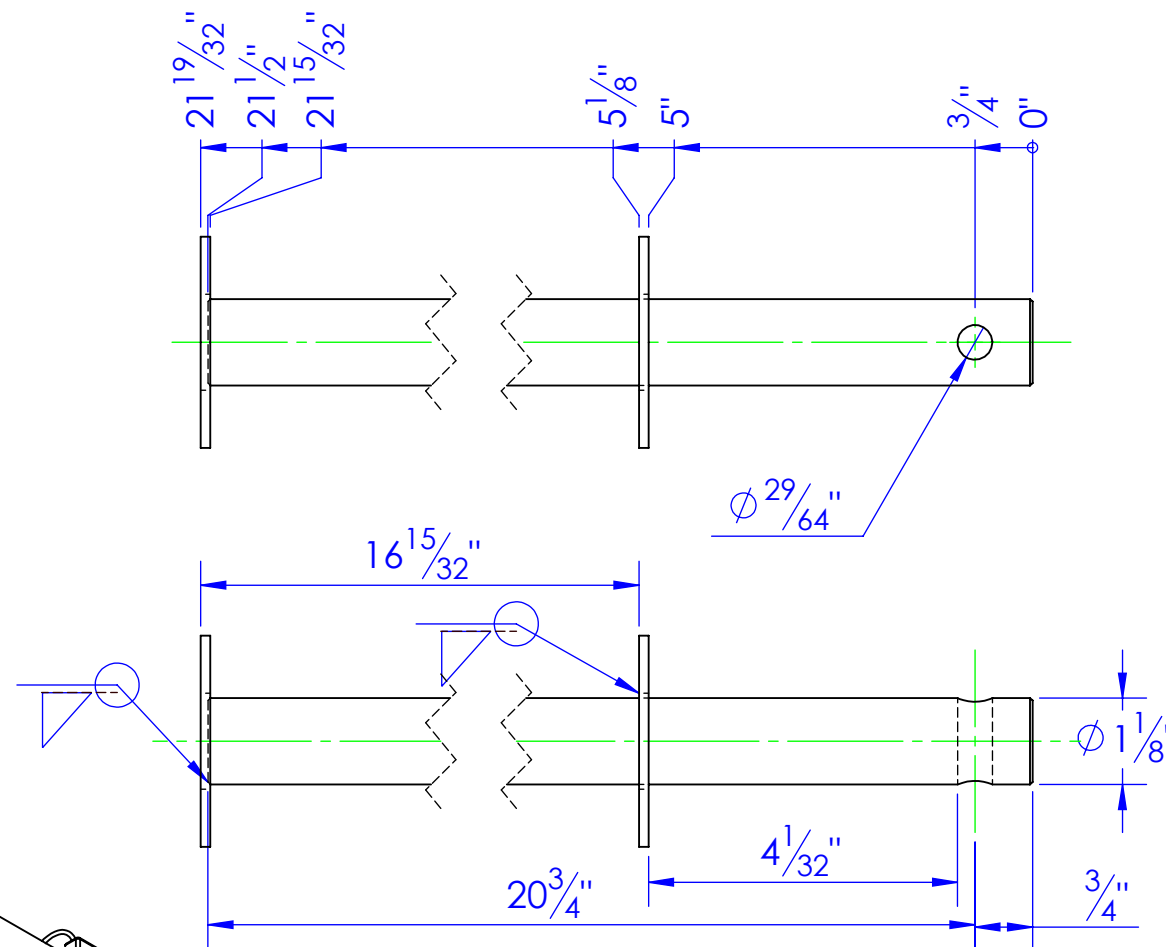
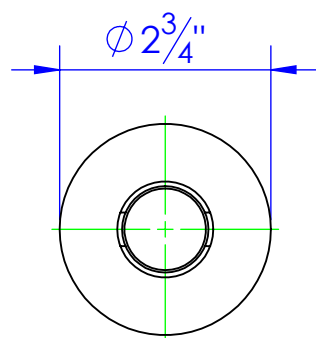


ITEM NO.	PART NUMBER	DESCRIPTION	DRAWING #	QTY.
1	BO-1.125 FW	FLAT WASHER 1-1/8"	STOCK	2
2	FP-HF-LIFT PIN	LIFT PIN, HYDRA FEEDER	30-2428	1
3	HD-PL .4375 HD	7/16 Lynch Pin.	STOCK	1

REV.	REVISIONS DESCRIPTION	DATE	APPROVED
A	UPDATED TO NEW DWG FROM 10-1710	12/4/2012	
B	MOVED WASHER TO 5" FROM 4-1/2 FOR 30 SERIES BEDS	10/23/2013	
C	CHANGE PIN PART # FROM STC-CR 1.125x4142 L 21.5 TO FP-HF-LIFT PIN	11/19/2022	HP

REQD QTY:
2 PER HYDRA FEEDER



DRAWING LOCATION:

M:\Drawings\Heath Information\Triple C\ST TC SW\30 HYDRA FEEDER\0400 HF Options\1400 Fabrication

ASM LOCATION:

M:\Drawings\Heath Information\Triple C\ST TC SW\SW MODELS\HF-HF

PROPRIETARY AND CONFIDENTIAL
THE INFORMATION CONTAINED IN THIS
DRAWING IS THE SOLE PROPERTY OF TRIPLE
C INC. ANY REPRODUCTION IN PART OR
AS A WHOLE WITHOUT THE WRITTEN
PERMISSION OF TRIPLE C INC. IS PROHIBITED.

DIMENSIONS ARE IN INCHES
TOLERANCES:
FRACTIONAL $\pm 1/16$
ANGULAR: MACH ± 1 BEND \pm
TWO PLACE DECIMAL ± 0.10
THREE PLACE DECIMAL ± 0.005

MATERIAL ---
DO NOT SCALE DRAWING

NAME	DATE
DRAWN HEATH	11/19/2022
PART # HF-HF12-42	
ASM #	
COMMENTS:	
LIFT PIN, HYDRA FEEDER	

P.O. BOX 248,
SABETHA, KS 66534



SIZE	DWG. NO.	REV.
A	30-1414 C	C
SCALE: 1:2.5	WEIGHT: 6.51	SHEET 1 OF 1